

How to get to Pagoda Hotel from airport via Metro

First, take the metro to **Jiangwan Stadium Station (STEP 1 below)**. Then, walk from Jiangwan Stadium Station to Pagoda Hotel (**STEP 2 below**).

STEP 1. Get to the Jiangwan Stadium Metro Station

1. From Shanghai Pudong Airport (PVG)

1. From Baggage Claim to Metro Station

- After exiting baggage claim, take the escalator or elevator to **F2**.
- Follow overhead signs labeled "Subway" to reach "Pudong Airport Terminal 1&2 Station", located midway on the connecting bridge between T1 and T2 terminals.

2. Option 1: Metro Only (Budget-Friendly)

- Purchase a metro ticket and board **Line 2**.
- Transfer to **Line 18** at **Longyang Road Station**, then switch to **Line 10** at **Guoquan Road Station**.
- Exit at **Jiangwan Stadium Station**.
- 🕒 **Travel Time: ~90 minutes** | 🎫 **Fare: ¥7**

3. Option 2: Maglev + Metro (Faster)

- At "Pudong Airport Terminal 1&2 Station", buy a ticket for the Maglev Train (8 minutes to Longyang Road Station, ¥40).
- At **Longyang Road Station**, purchase a metro ticket and board **Line 18** → **Line 10** (same route as Option 2) to **Jiangwan Stadium Station**.
- Cross the pedestrian bridge to SIMIS.
- 🕒 **Travel Time: ~50 minutes** | 🎫 **Total Fare: ¥44**

From Shanghai Hongqiao Airport (SHA) to SIMIS

From T2 Terminal:

1. After exiting Baggage Claim, take the escalator or elevator down to **B1**.
2. Exit the airport and follow the overhead signs for "**Subway**".
3. Walk **3 minutes** to reach the "**Hongqiao Airport Terminal 2**" metro station.

From T1 Terminal:

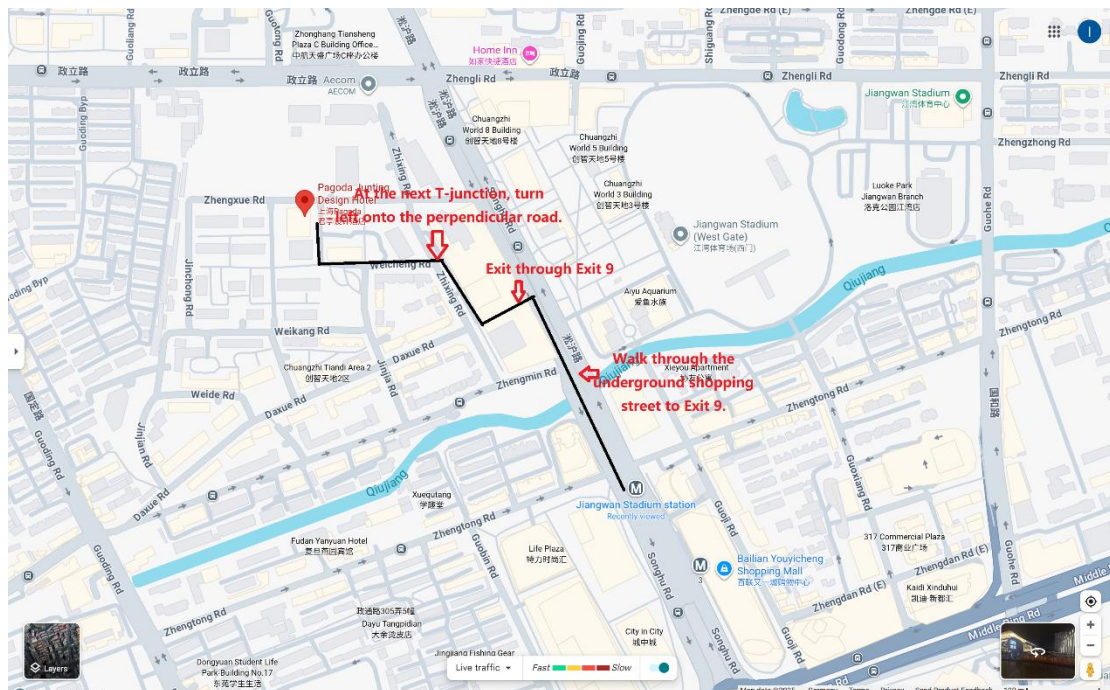
1. Exit through **Gate 3** of T1 Terminal on **F1**.
2. Follow the signs for "**Subway**".

3. Walk along the covered corridor for about **5 minutes** to reach **Entrance 1 of "Hongqiao Airport Terminal 1"** on Metro Line 10.

Purchase a metro ticket and board Line 10. Exit at **Jiangwan Stadium Station**.

- Cross the pedestrian bridge to SIMIS.
- 🕒 **Travel Time: ~60 minutes** | 🎫 **Total Fare: ¥6**

STEP 2. From Jiangwan Stadium Metro Station to Pagoda Hotel



1. From Jiangwan Stadium Metro Station, follow the overhead signs and walk through the underground shopping street to Exit 9.

Turn left at the Metro gate machine

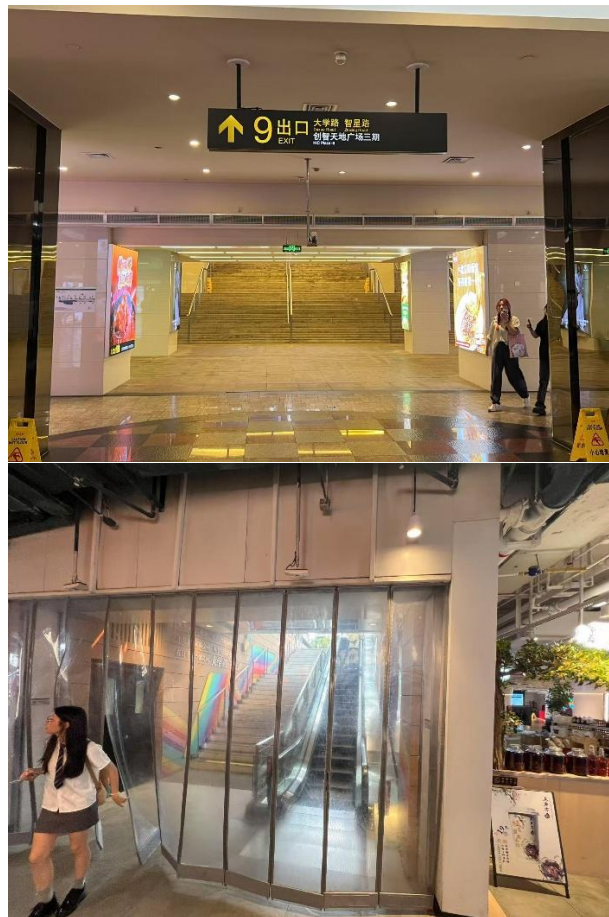


Follow the overhead signs to Exit 9





Exit at Exit 9



2. After exiting through **Exit 9**, you will arrive at a small square. Directly ahead is a T-junction. **Turn right** at the first intersection, go north along Zhixing Road.



At the next T-junction, **turn left** onto the perpendicular road (Weicheng Road).



3. Continue straight, and you will notice the **Pagoda Hotel** on your right-hand side.



In fact, we do not recommend taking the Metro if you are carrying large luggage, as the Pagoda Hotel is still a distance from the nearest metro station. Considering Shanghai's hot weather and the complex traffic around the hotel, it may not be the most

convenient option.

If you still prefer to explore the city by metro, we strongly recommend downloading "**Gaode Maps**" (**Amap**) in advance. You can find the download method and usage instructions in the "[Tips](#)" section of our website. Here are the specific directions for taking the metro: